



REGIONAL SPECIALISED METEOROLOGICAL CENTRE-TROPICAL CYCLONES, NEW DELHI
TROPICAL CYCLONE ADVISORY BULLETIN NO. 22

FROM: RSMC –TROPICAL CYCLONES, NEW DELHI

TO: STORM WARNING CENTRE, NAYPYI TAW (MYANMAR)
STORM WARNING CENTRE, BANGKOK (THAILAND)
STORM WARNING CENTRE, COLOMBO (SRILANKA)
STORM WARNING CENTRE, DHAKA (BANGLADESH)
STORM WARNING CENTRE, KARACHI (PAKISTAN)
METEOROLOGICAL OFFICE, MALE (MALDIVES)
OMAN METEOROLOGICAL DEPARTMENT, MUSCAT (THROUGH RTH JEDDAH)
YEMEN METEOROLOGICAL SERVICES, REPUBLIC OF YEMEN (THROUGH RTH JEDDAH)
NATIONAL CENTRE FOR METEOROLOGY, UAE (THROUGH RTH JEDDAH)
PRESIDENCY OF METEOROLOGY AND ENVIRONMENT, SAUDI ARABIA (THROUGH RTH JEDDAH)
IRAN METEOROLOGICAL ORGANISATION, (THROUGH RTH JEDDAH)
QATAR METEOROLOGICAL DEPARTMENT (THROUGH RTH JEDDAH)

TROPICAL CYCLONE ADVISORY NO. 22 FOR NORTH INDIAN OCEAN (THE BAY OF BENGAL AND ARABIAN SEA) VALID FOR NEXT 120 HOURS ISSUED AT 1700 UTC OF 26.05.2021 BASED ON 1500 UTC OF 26.05.2021.

SUB: CYCLONIC STORM ‘YAAS’ (PRONOUNCED AS ‘YASS’) OVER NORTH INTERIOR ODISHA AND ADJOINING JHARKHAND.

THE CYCLONIC STORM ‘YAAS’ (PRONOUNCED AS ‘YASS’) OVER NORTH ODISHA MOVED NORTH-NORTHWESTWARDS WITH A SPEED OF ABOUT 15 KMPH DURING PAST 6 HOURS AND LAY CENTRED AT 1500 UTC OF TODAY, THE 26TH MAY, 2021, OVER NORTH INTERIOR ODISHA AND ADJOINING JHARKHAND NEAR LATITUDE 22.1°N AND LONGITUDE 86.2°E, ABOUT 60 KM WEST-NORTHWEST OF BARIPADA (42894) AND 160 KM SOUTH-SOUTHEAST OF RANCHI (42701).

FORECAST TRACK AND INTENSITY ARE GIVEN IN THE FOLLOWING TABLE:

| DATE/TIME(UTC) | POSITION LAT. °N/ LONG. °E | MAXIMUM SUSTAINED SURFACE WIND SPEED (KMPH) | CATEGORY OF CYCLONIC DISTURBANCE |
|----------------|-------------------------------|---|-------------------------------------|
| 26.05.21/1500 | 22.1/86.2 | 65-75 GUSTING TO 85 | CYCLONIC STORM |
| 26.05.21/1800 | 22.3 /86.1 | 55-65 GUSTING TO 75 | DEEP DEPRESSION |
| 27.05.21/0000 | 22.8/85.7 | 35-45 GUSTING TO 55 | DEPRESSION |

THE MAXIMUM SUSTAINED WIND SPEED IS 40 KNOTS GUSTING TO 50 KNOTS AROUND SYSTEM CENTRE. SEA CONDITION IS VERY ROUGH TO HIGH. THE ESTIMATED CENTRAL PRESSURE IS 982 HPA. MAXIMUM WINDS ARE OBSERVED IN THE NORTHEAST & NORTHWEST SECTOR. CYCLONIC STORM YAAS IS MOVING OVER RUGGED TERRAINS. UNDER THE INFLUENCE OF HIGH VERTICAL WIND SHEAR AND WEAK OUTFLOW IN UPPER LEVELS, THE SYSTEM WOULD FURTHER WEAKEN RAPIDLY.

AS PER SATELLITE IMAGERY BASED ON 1500 UTC OF THE 26TH MAY, INTENSE CONVECTIVE CLOUD MASS LIES OVER NORTH ODISHA, JHARKHAND AND ADJOINING SOUTHEAST BIHAR AND MODERATE TO INTENSE CONVECTION LIES OVER SOUTH ODISHA, CHATTISGARH, NORTH BIHAR AND GANGETIC WEST BENGAL.

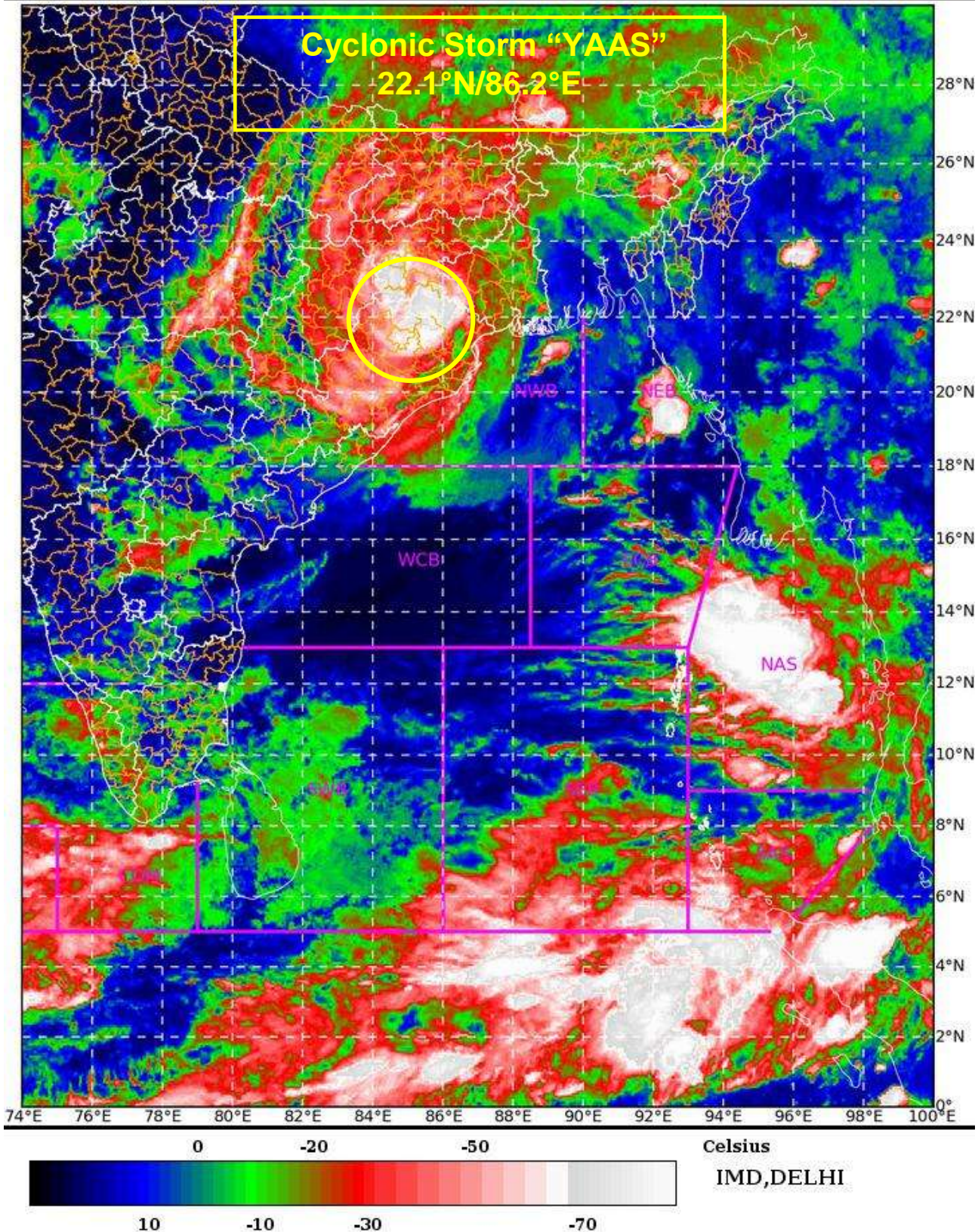
(D R PATTANAİK)
SCIENTIST-F RSMC NEWDELHI

PROBABILITY OF CYCLOGENESIS (FORMATION OF DEPRESSION)

NIL: 0%, LOW: 1-25%, FAIR: 26-50%, MODERATE: 51-75% AND HIGH: 76-100%



L1C Mercator



PROBABILITY OF CYCLOGENESIS (FORMATION OF DEPRESSION)

NIL: 0%, LOW: 1-25%, FAIR: 26-50%, MODERATE: 51-75% AND HIGH: 76-100%



OBSERVED AND FORECAST TRACK ALONGWITH CONE OF UNCERTAINTY OF CYCLONIC STORM "YAAS" OVER NORTH INTERIOR ODISHA AND ADJOINING JHARKHAND BASED ON 1500 UTC OF 26th MAY, 2021



DATE/TIME IN UTC
IST=UTC + 0530
L: LOW PRESSURE AREA
WML: WELL MARKED LOW PRESSURE AREA
D: DEPRESSION (17-27 KT)
DD: DEEP DEPRESSION (28-33 KT)
CS: CYCLONIC STORM (34-47 KT)
SCS: SEVERE CYCLONIC STORM (48-63KT)
VSCS: VERY SEVERE CYCLONIC STORM (64-89 KT)
ESCS: EXTREMELY SEVERE CYCLONIC STORM (90-119 KT)
SuCS: SUPER CYCLONIC STORM (≥ 120 KT)

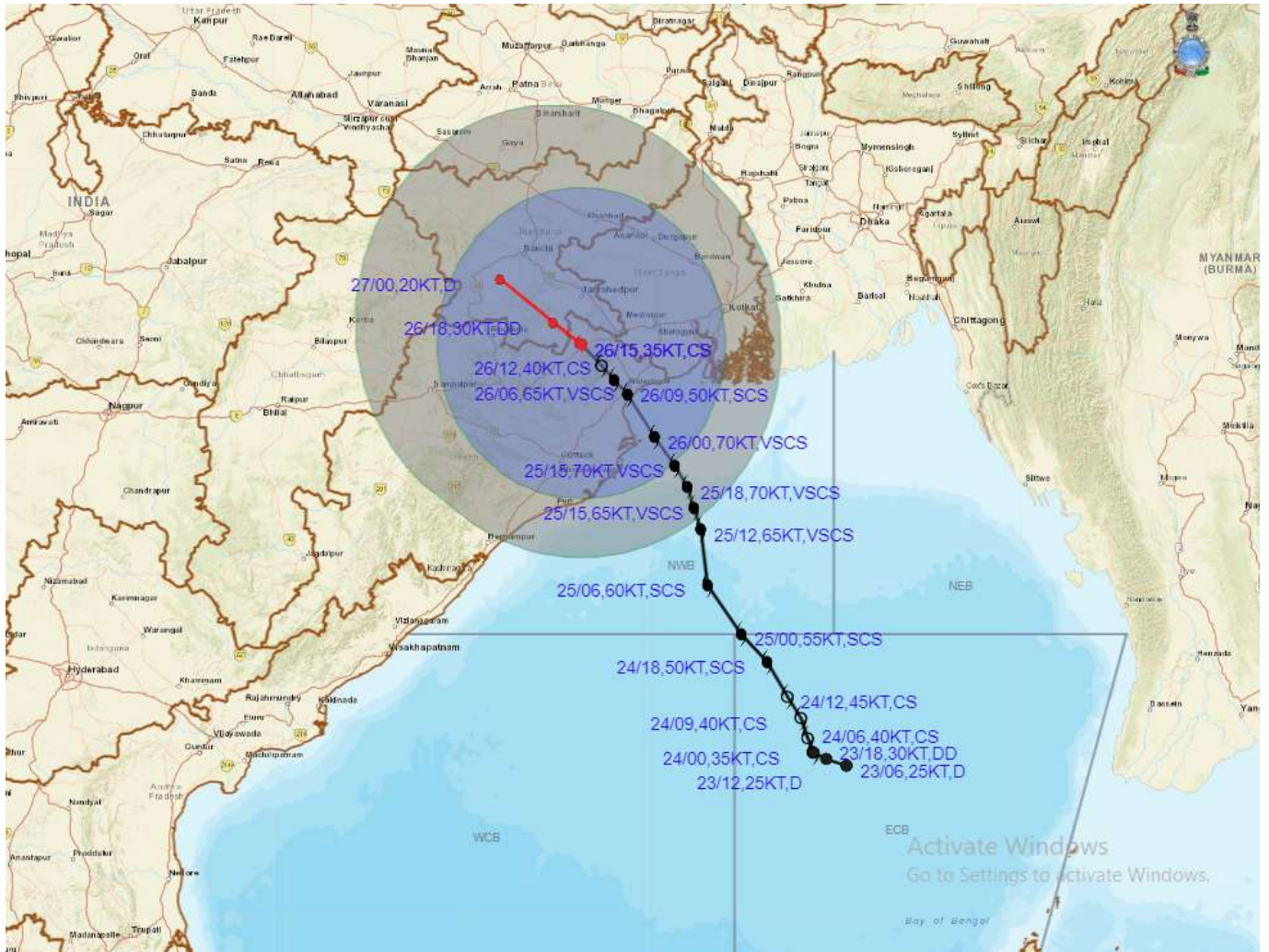
- LESS THAN 34 KT
- 34-47 KT
- ≥ 48 KT
- OBSERVED TRACK
- FORECAST TRACK
- CONE OF UNCERTAINTY

PROBABILITY OF CYCLOGENESIS (FORMATION OF DEPRESSION)

NIL: 0%, LOW: 1-25%, FAIR: 26-50%, MODERATE: 51-75% AND HIGH: 76-100%



OBSERVED AND FORECAST TRACK ALONGWITH QUADRANT WIND DISTRIBUTION OF CYCLONIC STORM "YAAS" OVER NORTH INTERIOR ODISHA AND ADJOINING JHARKHAND BASED ON 1500 UTC OF 26th MAY, 2021



DATE/TIME IN UTC
IST=UTC + 0530
L: LOW PRESSURE AREA
WML: WELL MARKED LOW PRESSURE AREA
D: DEPRESSION (17-27 KT)
DD: DEEP DEPRESSION (28-33 KT)
CS: CYCLONIC STORM (34-47 KT)
SCS: SEVERE CYCLONIC STORM (48-63KT)
VSCS: VERY SEVERE CYCLONIC STORM (64-89 KT)
ECS: EXTREMELY SEVERE CYCLONIC STORM (90-119 KT)
SuCS: SUPER CYCLONIC STORM (≥ 120 KT)

- LESS THAN 34 KT
- 34-47 KT
- ≥ 48 KT
- OBSERVED TRACK
- FORECAST TRACK
- ▲ CONE OF UNCERTAINTY
- AREA OF MAXIMUM SUSTAINED WIND SPEED:
- 28-33 KT (52-61 KMPH)
- 34-49 KT (62-91 KMPH)
- 50-63 KT (92-117 KMPH)
- ≥ 64 KT (≥118 KMPH)

IMPACT OVER THE SEA

| MSW (knot/kmph) | Impact | Action |
|-----------------|------------------------|--|
| 28-33 (52-61) | Very rough seas | Total suspension of fishing operations |
| 34-49 (62-91) | High to very high seas | Total suspension of fishing operations |
| 50-63 (92-117) | Very high seas | Total suspension of fishing operations |
| ≥ 64 (≥118) | Phenomenal | Total suspension of fishing operations |

PROBABILITY OF CYCLOGENESIS (FORMATION OF DEPRESSION)
NIL: 0%, LOW: 1-25%, FAIR: 26-50%, MODERATE: 51-75% AND HIGH: 76-100%